

Practical Lab 01

Muhammad Saad Saqib

126065259 - msaad-saqib

Screenshots:

PartA1

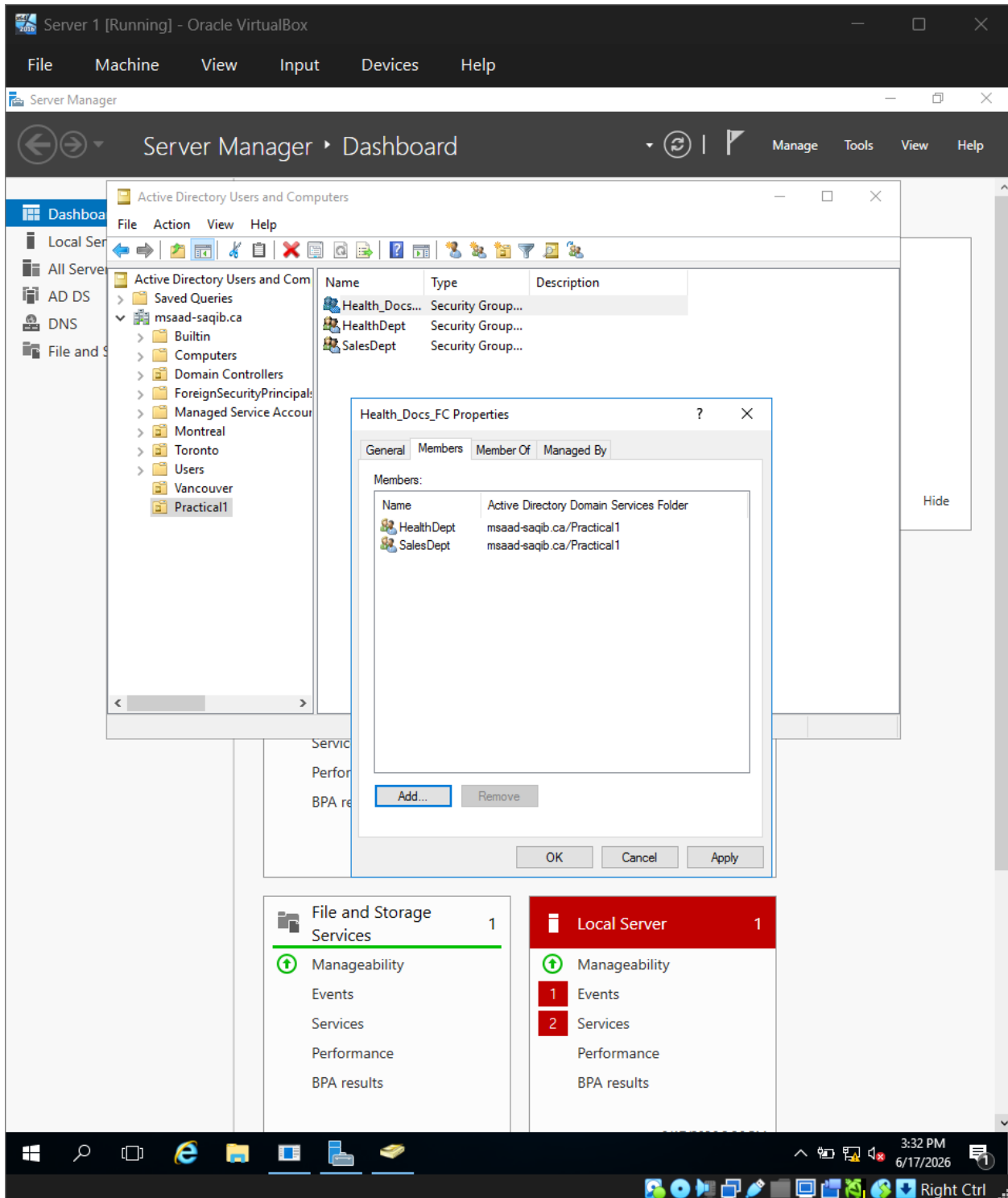


Figure 1. Health_Docs_FC Members tab

PartB1

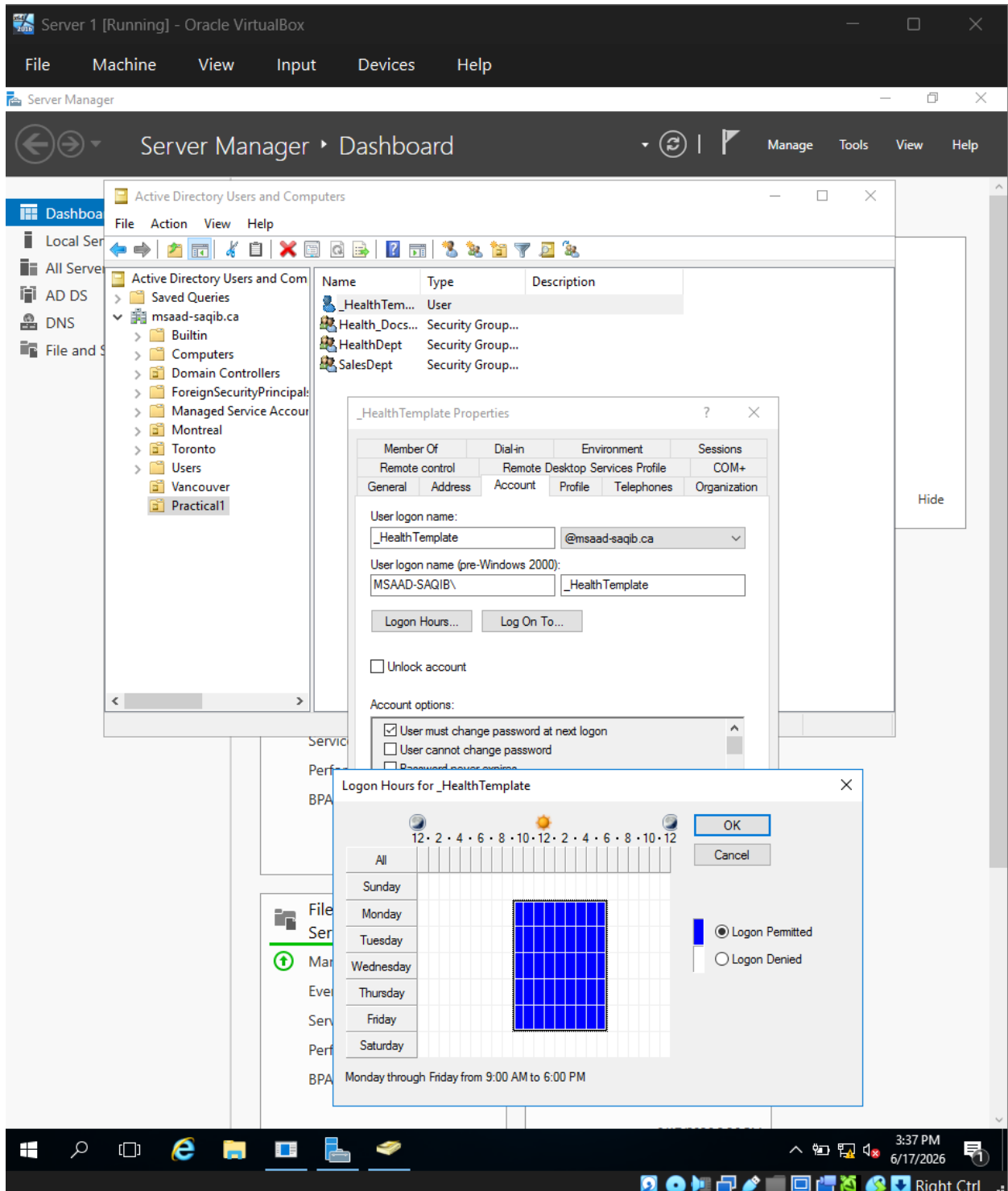


Figure 2. _HealthTemplate Account tab and Logon Hours

PartB2

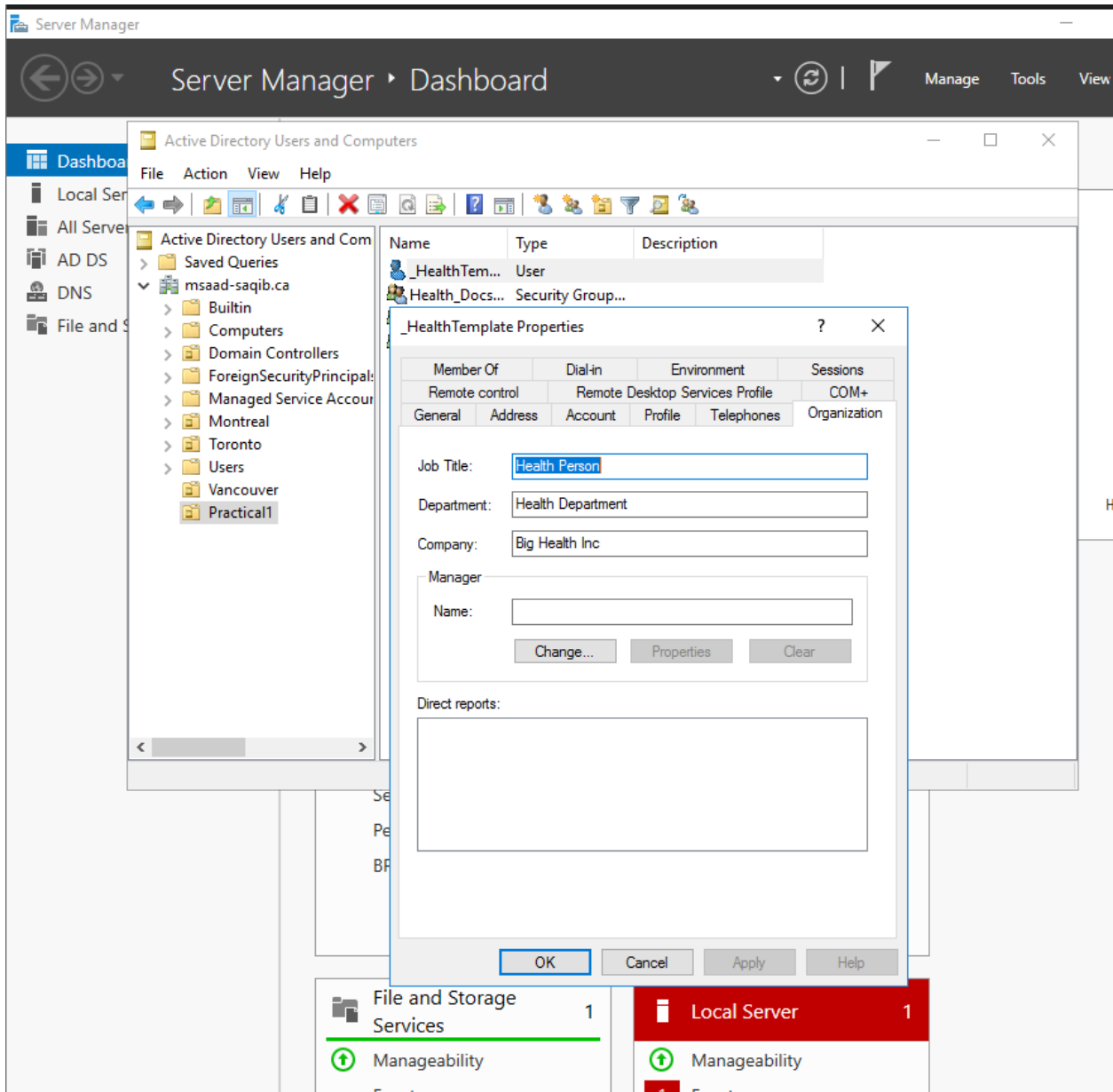


Figure 3. _HealthTemplate Organization tab

PartB3

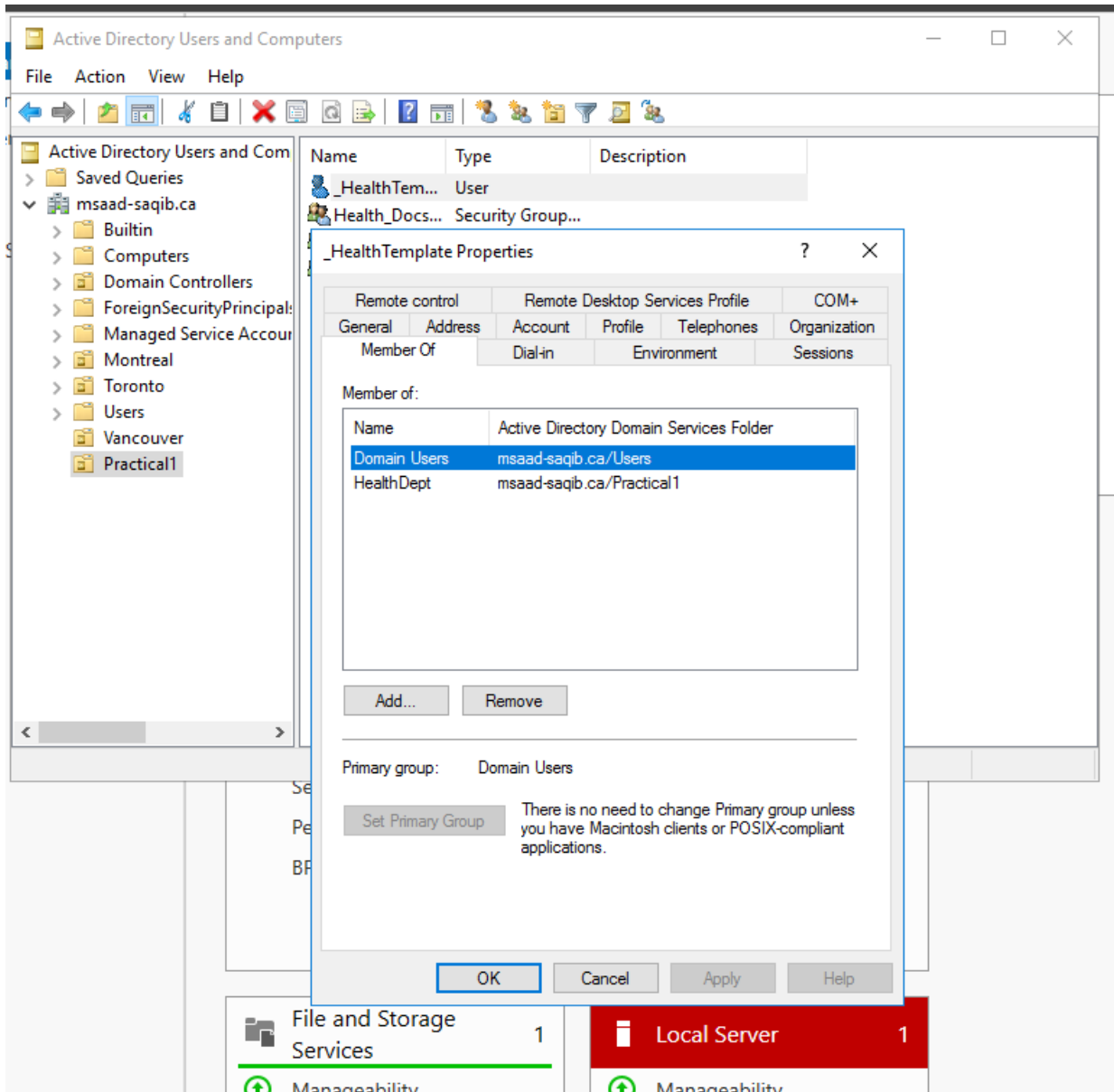


Figure 4. _HealthTemplate Member Of tab

PartD1

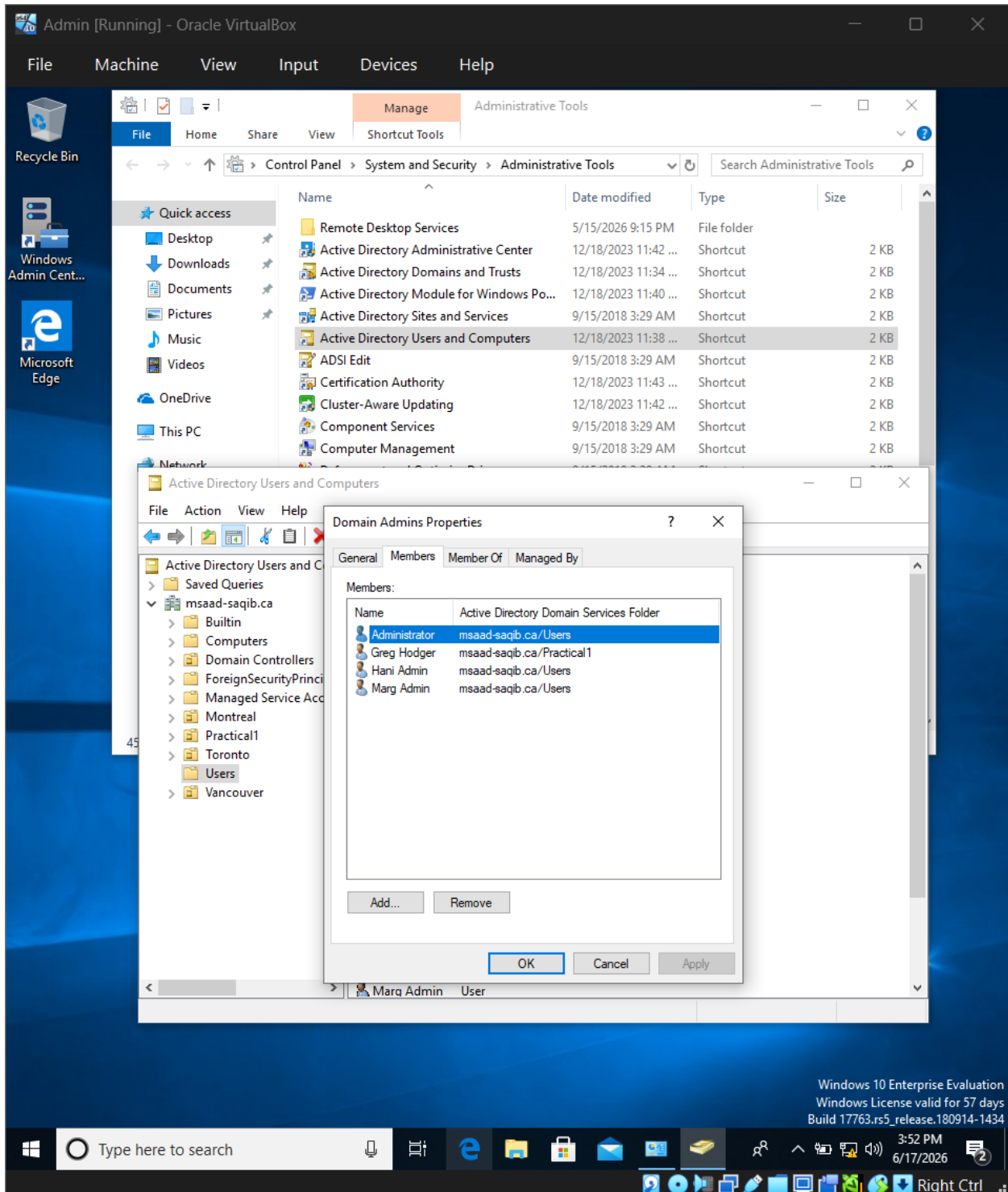


Figure 5. Domain Admins Members tab

PartD2

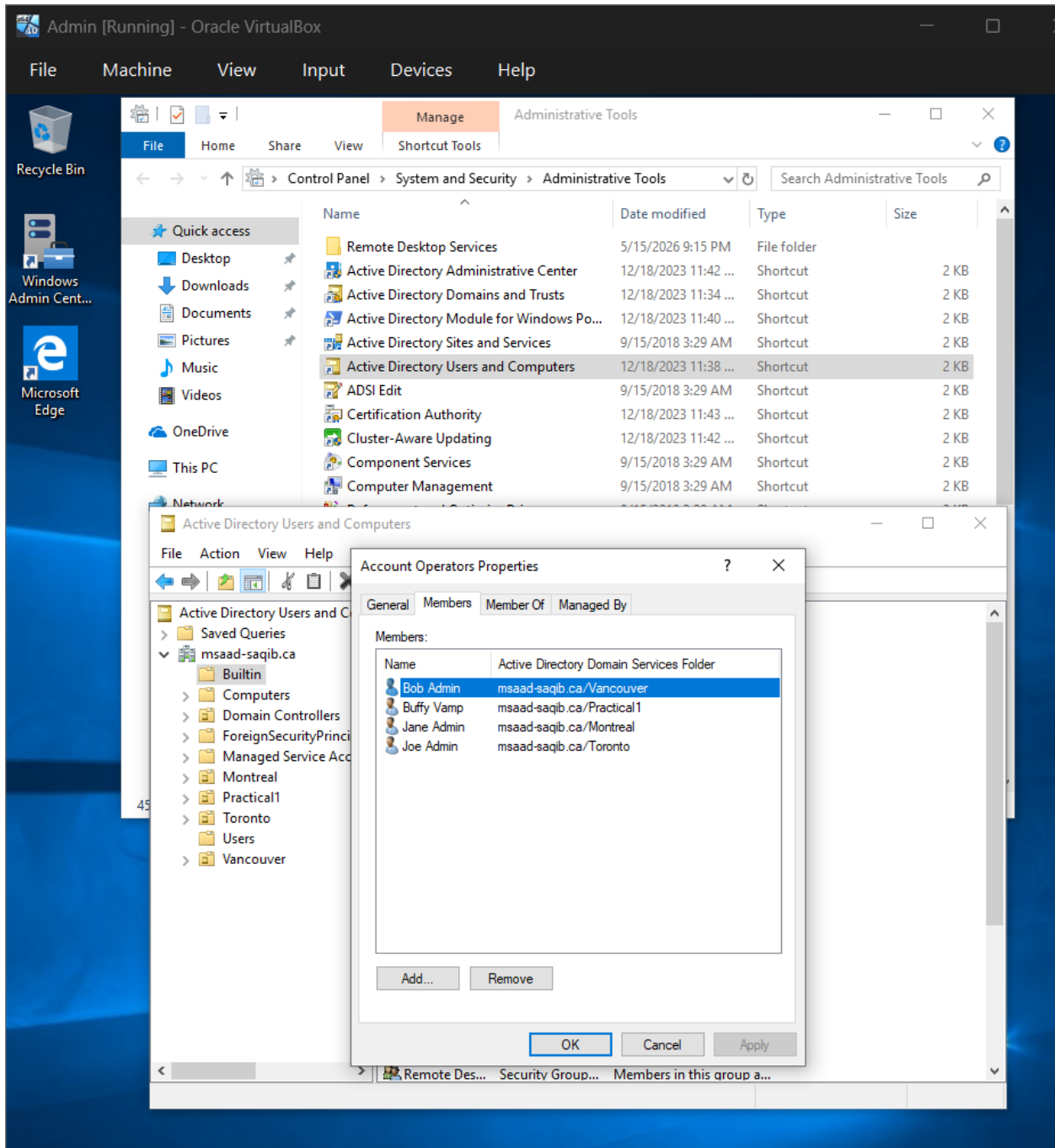


Figure 6. Account Operators Members tab

PartD3

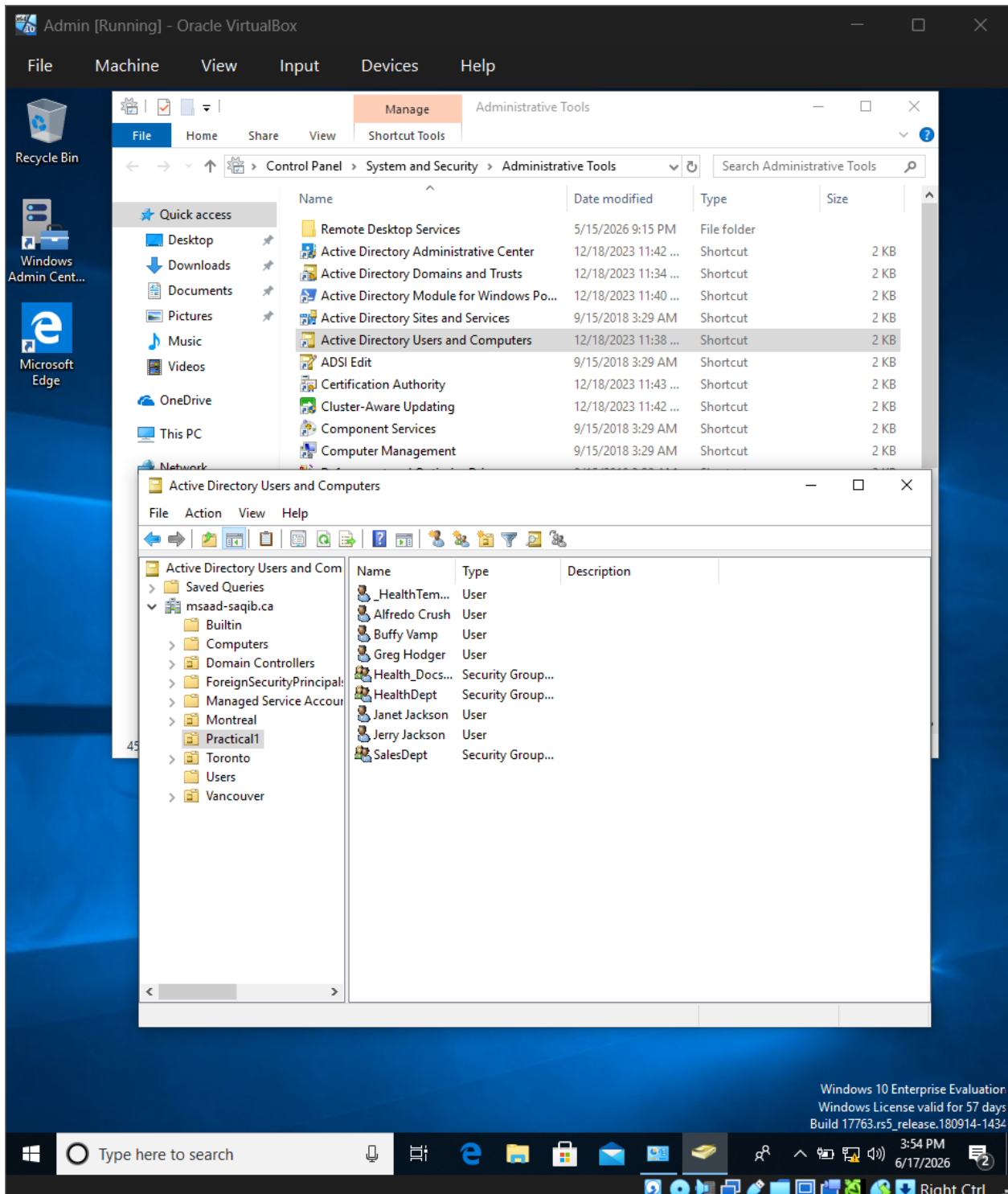


Figure 7. Practical1 OU contents

PartD4

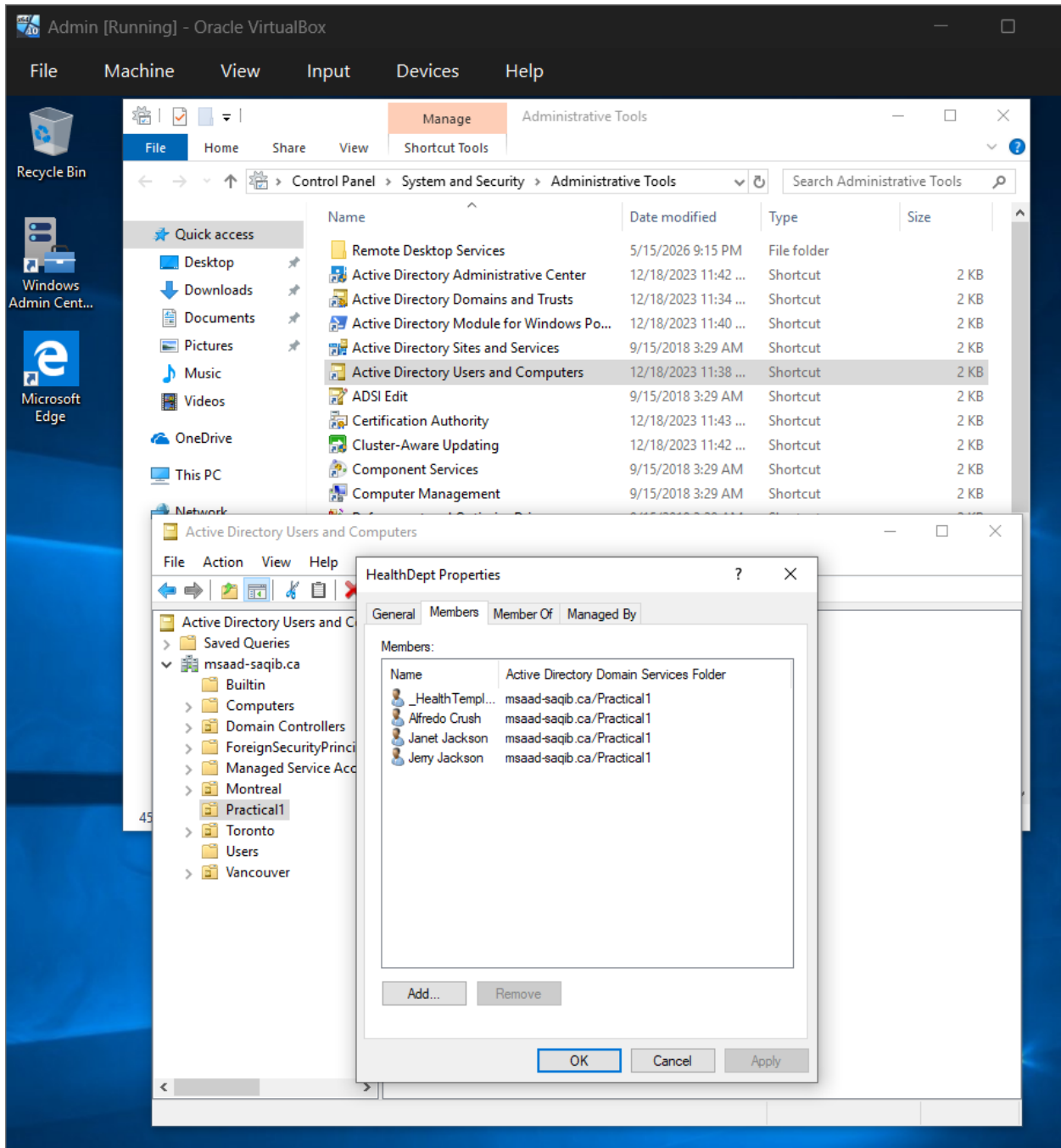
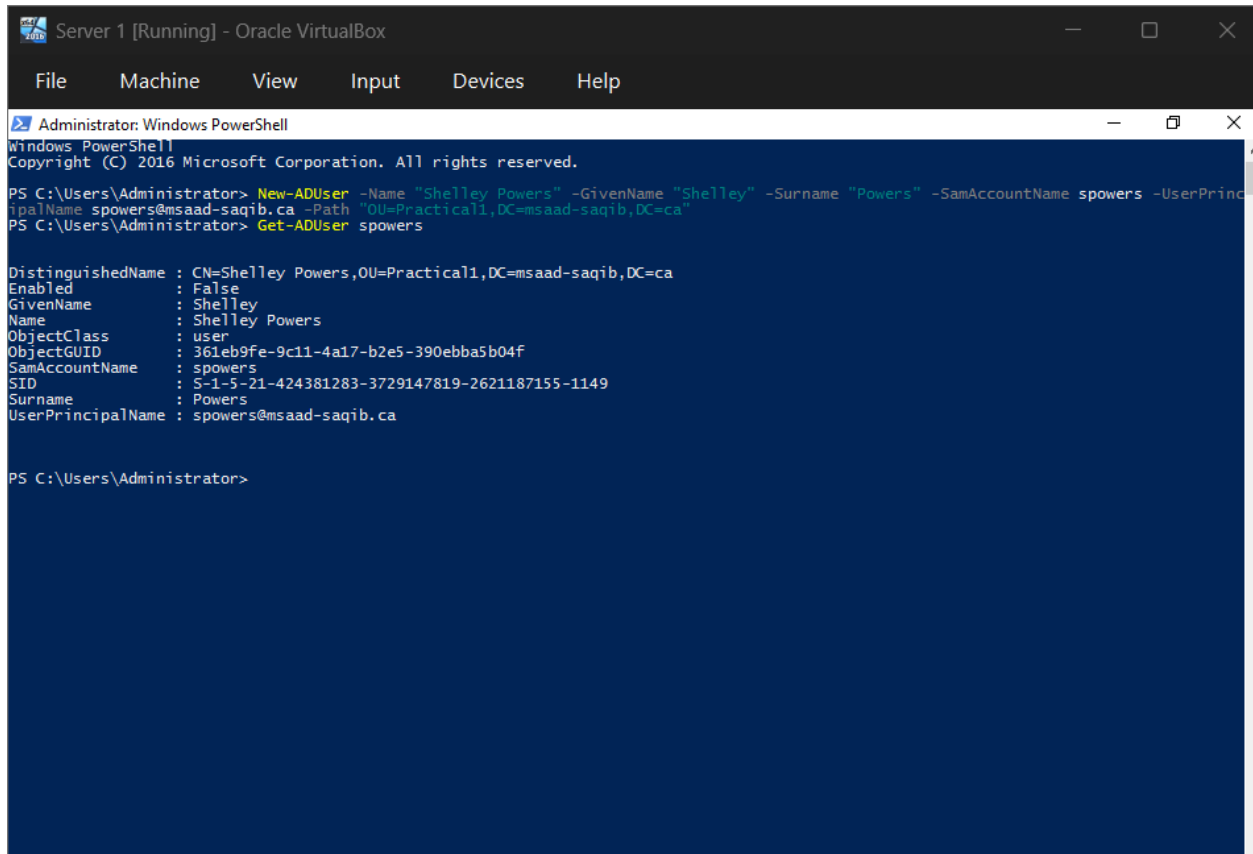


Figure 8. HealthDept Members tab

PartE



```
Server 1 [Running] - Oracle VirtualBox
File Machine View Input Devices Help
Administrator: Windows PowerShell
Windows PowerShell
Copyright (C) 2016 Microsoft Corporation. All rights reserved.

PS C:\Users\Administrator> New-ADUser -Name "Shelley Powers" -GivenName "Shelley" -Surname "Powers" -SamAccountName spowers -UserPrincipalName spowers@msaad-saqib.ca -Path "OU=Practical1,DC=msaad-saqib,DC=ca"
PS C:\Users\Administrator> Get-ADUser spowers

DistinguishedName : CN=Shelley Powers,OU=Practical1,DC=msaad-saqib,DC=ca
Enabled            : False
GivenName         : Shelley
Name              : Shelley Powers
ObjectClass       : user
ObjectGUID        : 361eb9fe-9c11-4a17-b2e5-390ebba5b04f
SamAccountName    : spowers
SID               : S-1-5-21-424381283-3729147819-2621187155-1149
Surname           : Powers
UserPrincipalName : spowers@msaad-saqib.ca

PS C:\Users\Administrator>
```

Figure 9. PowerShell New-ADUser command and output